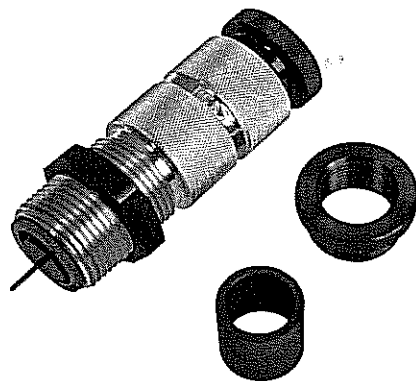


PRODUCT INSTRUCTIONS



COWBOY SHOTSHELL DIE-12 GAUGE

SAFETY

Reloading is an enjoyable and rewarding hobby that is easily conducted with safety. But carelessness or negligence can make reloading hazardous. This product has been designed from the beginning with the user's safety in mind. As with any reloading operation, some safety rules must be followed. By observing these few rules, the chance of hazardous occurrence causing damage or injury becomes extremely remote.

GENERAL

- Use the equipment as the manufacturer recommends. Study the instructions carefully and become thoroughly familiar with the operation of the product. Don't take short cuts.
- Observe "good housekeeping" in the work area. Keep tools and components neat, clean and orderly. Promptly clean up any powder spills.
- Always wear adequate eye protection.
- If any unusual resistance is encountered when moving the operating handle, STOP IMMEDIATELY and investigate the cause. To proceed against unusual resistance may damage equipment and/or cause serious injury!

LOADING DATA

- Use only laboratory tested data. We highly recommend the use of the SPEER Reloading Manual.
- OBSERVE ALL WARNINGS ABOUT THE USE OF MAXIMUM LISTED LOADS.

PRIMER HANDLING

- WARNING: Primers are designed to explode and will do so when subjected to heat or percussion.
- Do not decap live primers!
- Never attempt to seat or reseat a primer in a loaded cartridge.
- Store primers and powder beyond the reach of children and away from heat, dampness, open flames and electrical equipment.
- DO NOT use any primer unless its identity is positively known. Discard all mixed primers and those of uncertain or unknown identity.
- After a reloading session ends, return the remaining primers back into its original factory container. This will preserve the identity and shelf life of the primers.
- DO NOT SMOKE while handling powder or primers..

CASE PREPARATION

Due to the heavy powder residue fouling (see photo 1) that is created by Black Powder and certain Black Powder Substitutes, RCBS recommends a two step case cleaning process.

First soak your brass shotshell cases in a 50/50 mixture of white vinegar and water for about ten(10) minutes. Remove the cases and thoroughly rinse and dry them.

Second, place your cases in a vibratory type tumbler and clean and polish them for at least thirty(30) minutes or until your cases are clean.

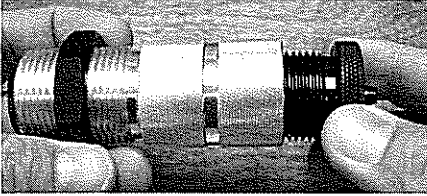


Photo 1

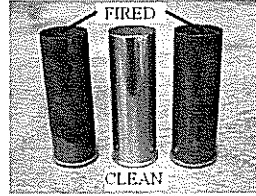


Photo 2

TO USE

For sizing and de-priming. Thread the Decap Rod Assembly into the Die Body (photo 2).

Using either a 1-1/2" Socket or 15" adjustable wrench (photo 3), remove the bushing from the top of your RCBS single stage press. Due to the rather thin hex portion of the bushing, take care not to allow the wrench to slip, as you may injure yourself or damage the bushing. If you have problems removing the bushing or do not have the proper tools, you may have to take your press to your gunsmith or local hardware store to have the bushing removed.

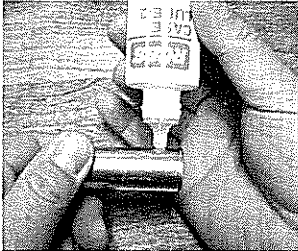


Photo 3

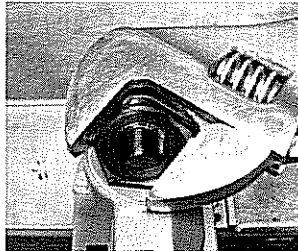


Photo 4

Install the shell holder into the press ram and lower the handle to raise the ram.

Thread the Die Body into the press until the base of the die just touches the shell holder. Lock the die in place with the die lock ring. This is the proper adjustment for the shotshell die because it does not take a great deal of force to resize the base of

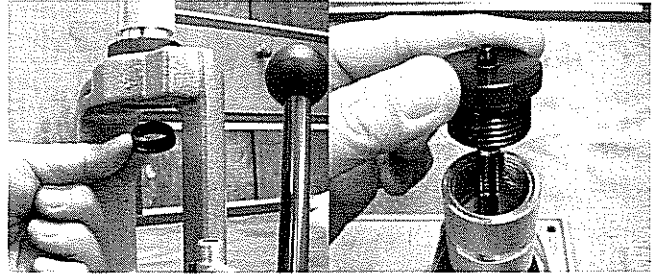


Photo 5

Photo 6

Remove the Crimp Sleeve from the die box. You will notice the Crimp Shoulder that is machined into the inside base of the Sleeve. This end goes in first. Insert the Crimp Sleeve into the die body (photo 7). Install the Crimp Bushing a few turns into the Die Body.

Insert a shell into the shell holder and lower the handle. Leaving the handle in the down position, start to thread the Crimp Bushing further into the Die Body until firm resistance is felt. Raise the handle and remove and inspect the case mouth (photo 8).



Photo 7

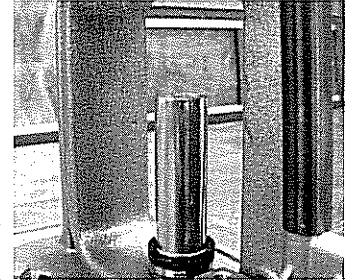


Photo 8

If there is not enough radius at the case mouth, thread the Crimp Bushing another 1/2 turn into the Die Body and re-crimp the round. It is not necessary or desirable to put a large amount of crimp on the brass shotshell as it may cause the over shot card to loosen and shorten the life of the case.

If there is too much crimp, back the Crimp Bushing out of the die body until the desired amount of crimp is achieved.

the brass hulls. DO NOT “CAM OVER” THE PRESS AS YOU MAY DAMAGE THE SHELL HOLDER. Raise the handle to lower the ram.

Apply a small amount of Case Lube-2 to the bottom inch of the brass shotshell above the rim (photo 4). Insert the brass shotshell into the shell holder and cycle the handle. The brass shotshell is now sized and de-primed.

You will feel very little sizing resistance. The amount of resistance you feel will be dependant upon the condition of your firearm and the type of handload that you make.

PRIMING

The brass shotshell has a large pistol size primer pocket. The priming that is provided with your single stage press is recommended for repriming your cases. Insert the primer into the primer seat plug assembly, raise the ram slightly, position the primer arm and lower the ram to seat the primer.

NOTE: Remember to remove the case lube from the base of the brass shotshell prior to firing the round.

POWDER, WADS AND SHOT

Follow your reloading manual for the proper ‘recipe’ of Black Powder or Black Powder substitute, over powder card, wads and spacers, shot charge and over shot card.

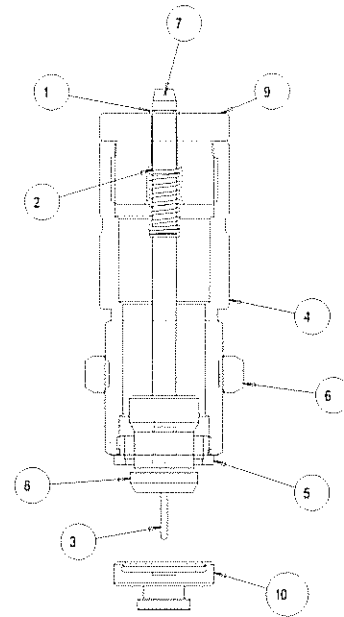
These components can be loaded manually or you can use a basic single stage shotshell press to insert these components.

CAUTION: If you are using Black Powder, do not attempt to meter this powder through any powder measuring system designed for smokeless powder. Use a Black Powder specific powder measure or weigh each charge individually.

CRIMPING

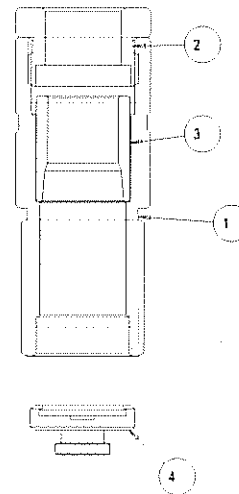
Remove the Decap Rod Assembly (photo 5). Remove the Size Ring from the base of the die body (photo 6). You may have to remove the die body from the press to remove the Size Ring.

SIZING CONFIGURATION



Item	Qty	Part No	Description
1	2	180056	Retaining Ring
2	1	188749	Spring
3	1	190000	Decap Pin
4	1	799005	Die Body
5	1	799007	Size Ring
6	1	799014	Lock Ring
7	1	799056	Decap Rod
8	1	799057	Expander Ball
9	1	799058	Decap Bushing
10	1	799061	Shell Holder

ROLL CRIMPING CONFIGURATION



Item	Qty	Part No	Description
1		799005	Die Body
2		799059	Crimp Bushing
3		799060	Crimp Sleeve
4		799061	Shell Holder



PRECISIONEERED RELOADING EQUIPMENT

We think that we make the very best reloading equipment in the world. If you agree, please tell your friends. If you disagree, tell us we want to do something about it!

Customer Service

1-800-533-5000 (US or Canada) or 530-533-5191

Hours: Monday - Thursday, 6:30am - 3:00pm Pacific Time
(hours may vary)

e-mail: rcbs.tech@atk.com or visit our website at
www.rcbs.com

RCBS 605 Oro Dam Blvd. Oroville, CA 9596

CCI - SPEER - RCBS
OUTERS - RAMLINE - ORBEX - FEDERAL

7200581-0107

RECORD KEEPING

Keep complete records of reloads. Apply a descriptive label to each box showing the date produced, and the primer, powder and bullet used. Labels for this purpose are packed with SPEER bullets.

Since RCBS has no control over the choice of components, the manner in which they are assembled, the use of this product, or the firearms in which the resulting ammunition may be used, no responsibility, either expressed or implied, is assumed for the use of ammunition reloaded with this tool.

RCBS COWBOY SHOTSHELL DIE-12 GAUGE

Using period correct Brass Shotshell cases presents challenges to the Cowboy Action Shooter. Modern shotshell reloading presses are designed around plastic hulls using 209 size shotshell primers and not the large pistol primer used in current manufactured brass 12 gauge cases. The RCBS Cowboy Shotshell Die allows you to de-prime, re-prime and roll crimp the finished case mouth. All other operations can be done manually or on a single stage shotshell press.

The Cowboy Shotshell Die is designed to be used with the Rock Chucker® Supreme, Rock Chucker® or Reloader Special-5 single stage presses. These dies can also be used on any other single stage press with a 1-1/4"-12 threaded removable press bushing.

UNPACKING

Open the box and look for the following items listed below. Refer to the parts list for identification.

- Die Body Assembly
- Shell Holder
- Decap Rod Assembly
- Crimp Sleeve
- Crimp Bushing